

03 - CONTEXT ANALYSIS

<p>A - Geographical area of interest: to describe the territorial boundaries and the location of the planned actions; to define the spatial limits of the analysis.</p>	<ul style="list-style-type: none"> • Veneto is the 8th largest region in Italy, with a total area of 18,398.9 km². It is located in the north-eastern part of Italy and is bordered to the east by Friuli Venezia Giulia, to the south by Emilia-Romagna, to the west by Lombardy and to the north by Trentino-Alto Adige/Südtirol. At its northernmost corner it borders also on Austria. • It has 4,9 millions of inhabitants, with a density of 264 inhabitants per square kilometer • It is an attractive region: 10,4% of migrants (504.677 people), mostly from Romania, Morocco, Albania, Moldavia, China, Balkan regions, etc • 21% of aged people (retired / over 65 years old)
--	--

<p>B - Economic and productive system:</p>	
<p>B1 - classification of economic activities (sectors): composition of the productive structure of the territory and description of economic specializations</p>	<p>Main productive specialization of our firms:</p> <ul style="list-style-type: none"> • agriculture – 15% • building – 15% • manufacturing – 13% (mechanics and machineries, furniture, sport system, fashion and shoes: “Made in Italy”, etc) • trade (B2B and B2C) – 22% • tourism – 9% • professionals and B2B services – 14% <p>Export value: 50,283 billions of euros per year, 13,6% of the national exports</p> <ul style="list-style-type: none"> • the most important markets are Germany and eastern Europe, France, Spain, USA, China, Russia, Turkey; export destinations:



2012-1-IT1-LEO05-02621 - G92F12000140006

	<ul style="list-style-type: none"> • EU-15: 47,6% (EU-27: 69,41%) • Asia (middle east and far east): 14,80% • North America: 7,39% • South America: 3,74% • Africa: 3,51%
<p>B2 - number and size of firms: numerical consistency of the enterprises per classes of employees</p>	<ul style="list-style-type: none"> • more than 450.000 firms (>500.000 in 2011): 1 each 9 inhabitants • 99,8% small and medium enterprises organized in local and global productive systems and around 800 big companies (Safilo, Geox, Carraro, Lotto, Diesel, Salomon, Benetton, Aprilia....) • average size: 3,92 employees (1–9 employees: 87%, 10–49 employees: 3%)
<p>B3 - Presence of clusters, productive specialization and local labour systems: if so, describe them</p>	<ul style="list-style-type: none"> • In Veneto fashion, furniture, mechatronics and metals, food services sectors produce a higher proportion of added value. Chemical industry sectors, banking and insurance, public administration and other industries are minor sectors; • Veneto Region is the most visited area in Italy with 15 millions of tourists (9 millions from abroad) and more than 60 millions of presences per year: historical and artistic attractions (Venice, Padua, Verona), seaside, great mountains, natural spas and lakes. • Tertiary sector is, nowadays, the most important one • 2,134 millions of skilled workers (manufacturing – 37%, services – 60%)
<p>B4 – Produced added value, GDP per capita</p>	<ul style="list-style-type: none"> • regional GDP: 131.814 millions of Euros, the 10% of the national GDP • annual GDP pro-capita: 29.631 € (2011)
<p>B5 – Presence of path-dependence effects* related to the economical history of the area: elements of economic and industrial history of the area</p>	<ul style="list-style-type: none"> • Persistence of productive structures based on local supply chain in manufacturing sectors (districts and productive clusters) • presence of local labor systems (approximately 15 km) • awide and complete superior training offer: Lyceum, Technical Institutes, Professional Schools almost in every town • continuous and professional training system: more than 500 accredited training agencies with a wide network of seats, offices and classrooms • GDP per capita higher than national average • Vocation for transnational markets and labor mobility
<p>B6 - other elements useful to understand the economic and</p>	<ul style="list-style-type: none"> • In Veneto Region there are some of the most important universities in Italy: Padua, Venice and

2012-1-IT1-LEO05-02621 - G92F12000140006

productive structure of the area	Verona are national excellences in Economics, Engineering, Psychology, Law, Political Science, Architecture
---	---

*(Paul David (1985). "Clio and the Economics of QWERTY". American Economic Review: 332. "In such circumstances "historical accidents" can neither be ignored, nor neatly quarantined for the purpose of economic analysis")

C - Social system and demography: statistical and stratified data to describe the reference population	<ul style="list-style-type: none"> Inhabitants on 1th Jan. 1013:4,841,554 Births 45,393 Deaths 45,228 <p>Education 74,3% of the population with High School Diploma 9,7% with a University degree</p> <p>(More Data are available below)</p>
--	--

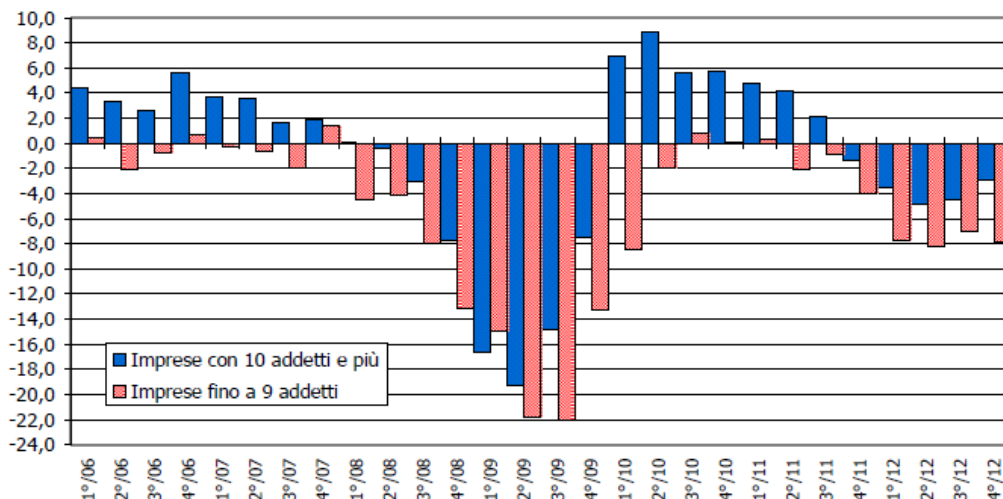
D - Labor market and institutions:	
D1 – Stratified statistical data on employment and unemployment: static data and dynamic data (pre/post crisis)	<p>production: <i>national level:</i> -3,1% from 2008 (pre crisis period) and -0,5% from 2010 <i>Veneto region:</i> -21,8% compared to 2008, but +5,7 in the last 2 years (See graf 2.3)</p> <p>unemployment rate:</p> <ul style="list-style-type: none"> <i>national level:</i> 9,7% but 32,6% of unemployment rate among young people <i>Veneto region:</i> 5,1% but 20% of unemployment rate among young people <p>(See Graf 3.11)</p>
D2 - Main rules of the labor market (national and other levels of government): types of labor contracts available and allowed permitted by the national or regional laws	<p>main employment contract:</p> <ul style="list-style-type: none"> open ended contract (full/part time) apprenticeship contract fixed term contract “consultant” worker autonomous worker
D3 – Laws or incentives/subsidies for the employment: presence of recruitment incentives and description	<ul style="list-style-type: none"> - apprenticeship contract - redundancy schemes (mobilità) - active policies for employment - new measures in progress



2012-1-IT1-LEO05-02621 - G92F12000140006

<p>D4 - Agencies active in the field of outplacement in the area: mapping of major public/private players and their intervention strategies</p>	<ul style="list-style-type: none"> - accredited training agencies in Veneto Region – 450 bodies and 521 training registered addresses; 300 of them are accredited as provider of services for unemployed people - network of 35 public offices for employment services (Centri per l’Impiego) + cooperation with Municipalities - Over 80 private companies (local and multinational) for labor intermediation and outplacement activities
<p>D5 - Sources of funding for the outplacement actions in the area: description of the main sources (private/public) to support outplacement actions</p>	<p>European Social Fund – managed by Veneto Region Fondimpresa – managed by national authority Ammortizzatori Sociali - Active policies for employment – <i>Position Paper (Ares (2012) 1326063 – 09/11/2012)</i> Private funding from companies</p>

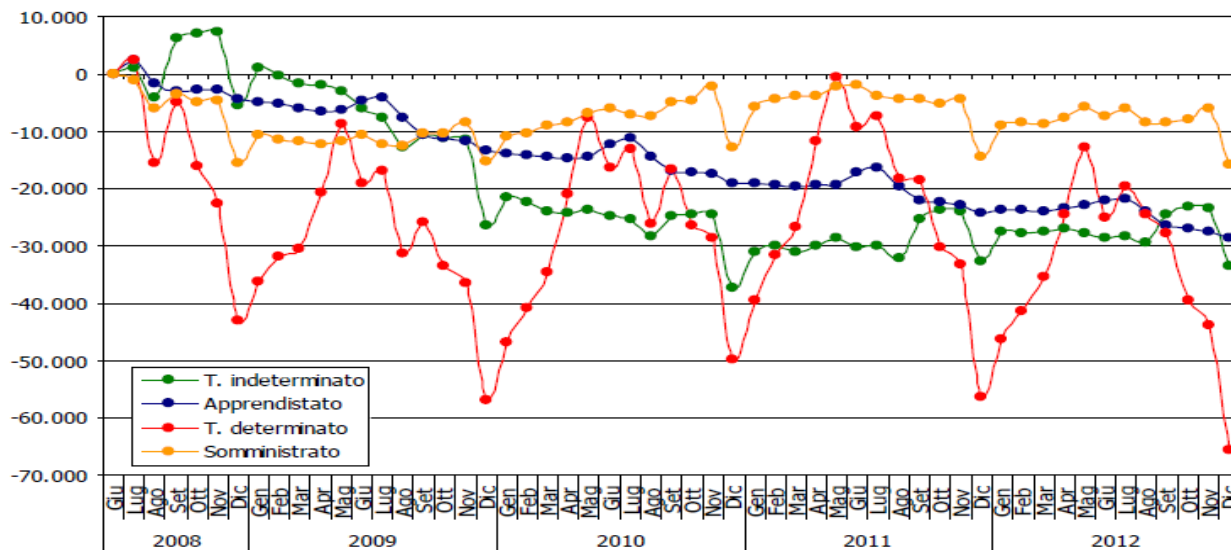
**Graf. 2.3 - Produzione manifatturiera in Veneto
Var. tendenziali 1° trim. 2006-4° trim. 2012**



Fonte: elab. Veneto Lavoro su dati Unioncamere del Veneto



Graf. 3.11 - Veneto. Posizioni di lavoro dipendente*
Variazioni rispetto al 30 giugno 2008. Saldi mensili cumulati per contratto



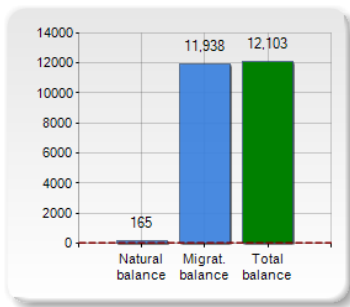
* Al netto del lavoro domestico e del lavoro intermittente.
Fonte: elab. Veneto Lavoro su dati Silv (estrazione 25 gennaio 2013)

2012-1-IT1-LEO05-02621 - G92F12000140006

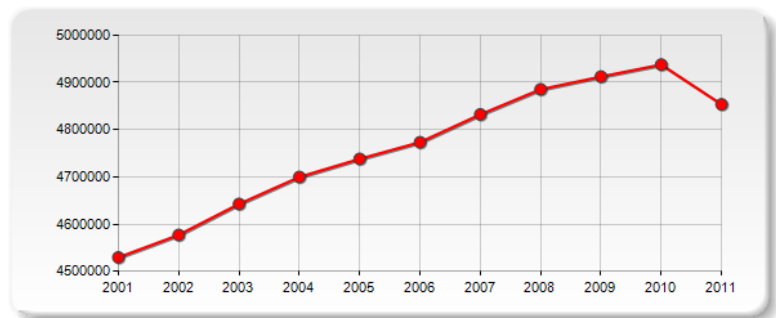
C - Social system and demography: statistical and stratified data to describe the reference population

P	Provinces	Demographic dimension (N° inhabitants)	(%)	cum (%)
1°	Padova	920,895	19.0	19.0
2°	Verona	899,817	18.5	37.5
3°	Treviso	876,051	18.0	55.6
4°	Vicenza	858,732	17.7	73.3
5°	Venezia	846,275	17.4	90.7
6°	Rovigo	242,167	5.0	95.7
7°	Belluno	209,720	4.3	100.0
	Total	4,853,657	100.0	-

Rank and Thematic map of the "DEMOGRAPHIC DIMENSION" in Provinces of Region VENETO



DEMOGRAPHIC BUDGET (Year 2011)



INHABITANTS TREND (Year 2011)

Inhabitants (N.)	4,853,657
Families (N.)	2,047,180
Males (%)	48.7
Females (%)	51.3
Strangers (%)	9.5
Average age (years)	43.3
Average annual variation (2005/2011)	+0.40

DEMOGRAPHIC DATA (Year 2011)

Source (<http://www.urbistat.it/AdminStat/en/it/demografia/popolazione/veneto/5/2>)